



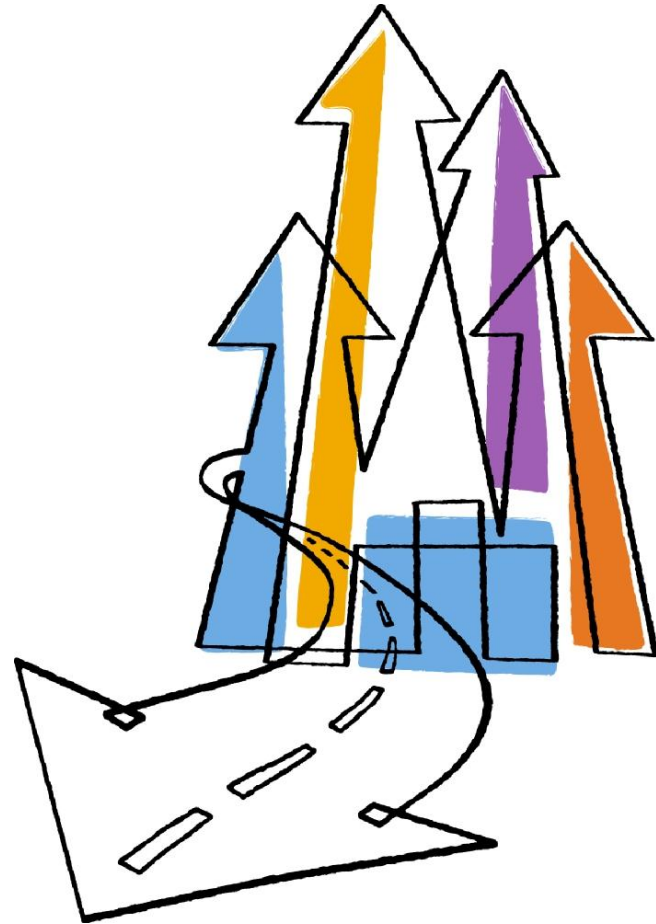
NetApp®

Go further, faster®

# Scaling Storage from Seismic Depths to Sequoia Heights

SC11

Booth #2605





# Agenda

- Who are we?
- What keeps you up at night?
- What will let you sleep?
- Achieving scalability





# Big Data ABC's

NetApp acquired Engenio E-Series solutions to address Big Data ABCs

**A** *Analytics*

**Gain Insight**

Real-time analytics for extremely large data sets

**B** *Bandwidth*

**Go Fast**

Intense data and computational workloads

**C** *Content*

**Lose Nothing**

Boundless secure scalable data storage

- Purpose-built solutions for demanding workloads
- Real-time results accelerating business success
- Confidently store, retain and access data at scale



NetApp®

# Broad and Deep Customers And Partners

## Enterprise Customers

## HPC Customers

## OEM Partners

Logos for Enterprise Customers include: LPL Financial Services, Wells Fargo, Kingfisher, Coca-Cola, Bank of America, Verizon, BMW, Sabre, JCPenney, WEB.DE, Walmart, PetroChina, Mercedes-Benz, HCA, and BlueCross BlueShield Association.

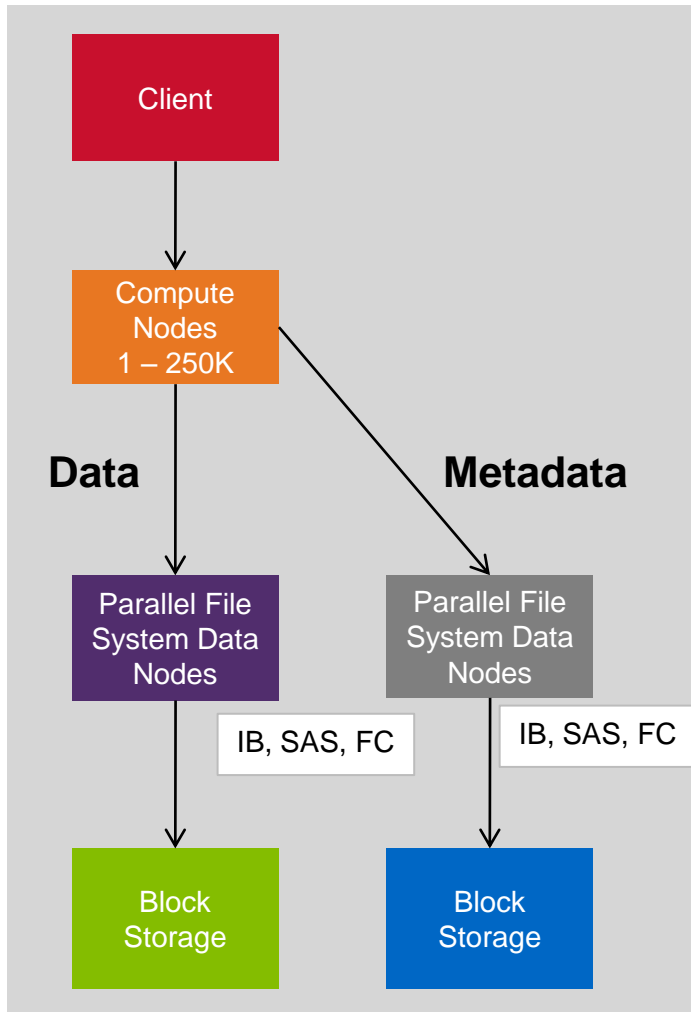
Logos for HPC Customers include: Jülich Forschungszentrum, NASA, Oak Ridge National Laboratory, NOAA, Raytheon, ERSC, Oak Ridge National Laboratory (Managed by UT-Battelle for the Department of Energy), bp, HLRN, Los Alamos National Laboratory, CGG VERITAS, INES, METEO FRANCE, BAE SYSTEMS, Lawrence Livermore National Laboratory, university of groningen, Sandia National Laboratories, and General Dynamics.

Logos for OEM Partners include: sgi, CRAY, IBM, DELL, Verari systems, PLATFORMS, FUJITSU, Sun, ORACLE, BLUEARC, TERA SCALA, TERADATA, acer, and panasas.

## Alliance Partners

Logos for Alliance Partners include: lustre, OPENFABRICS ALLIANCE, FCIA, SBB, INFINIBAND TRADE ASSOCIATION, QLOGIC, Storage Performance Council, Mellanox TECHNOLOGIES, SNIA, and IBM EMULEX.

# What keeps you up at night?



## ■ Performance

- Get bigger jobs done in a shorter amount of time
- Get more jobs done in the same amount of time
- Address widening gap between compute & storage

## ■ Reliability

- Minimize system downtime
- Enable data integrity and availability

## ■ Storage efficiency

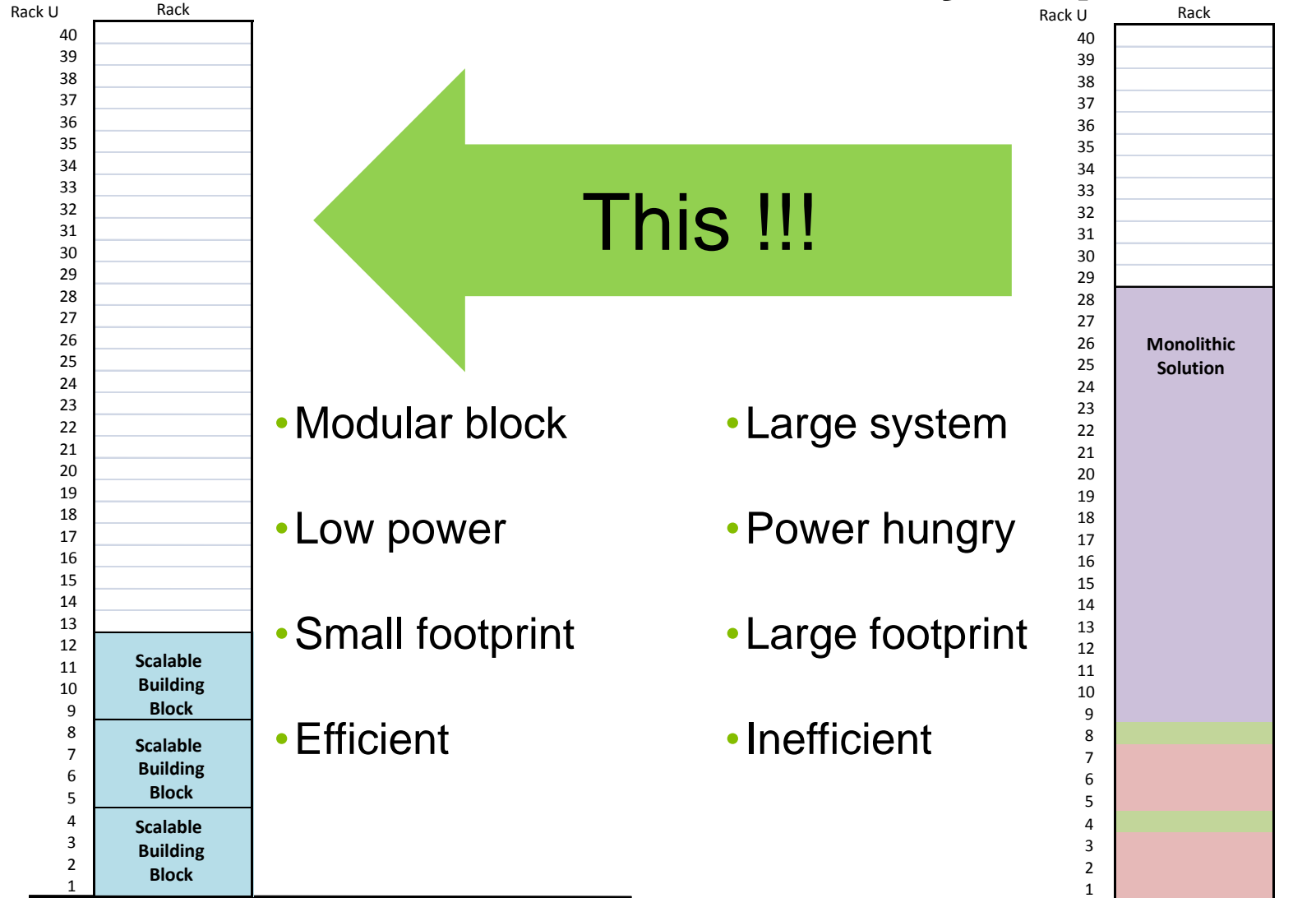
- Performance density, capacity density, power density

## ■ Cost

- Acquisition cost
- Operating expense

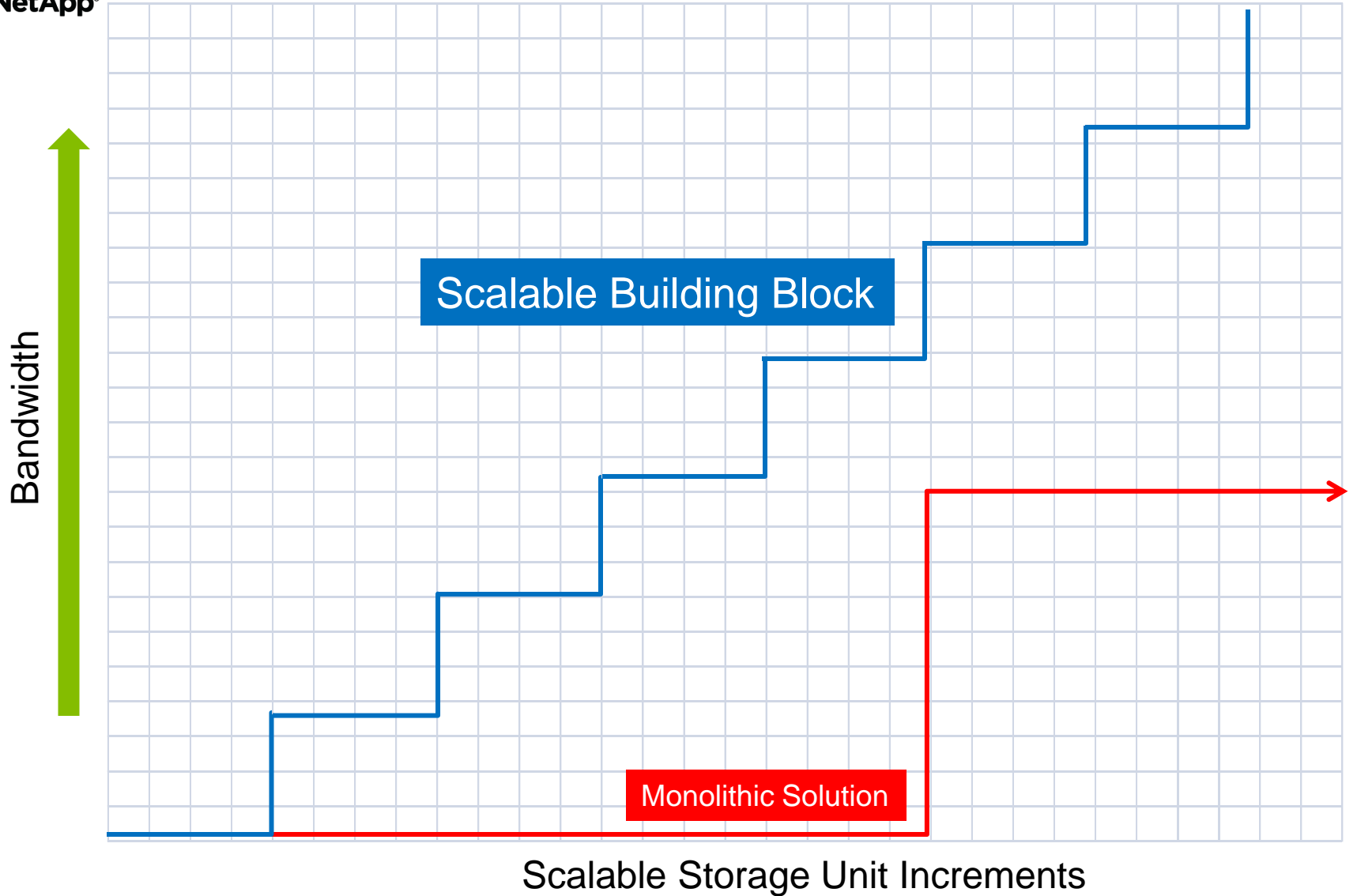


# What will let you sleep? How to Solve – which would you prefer?



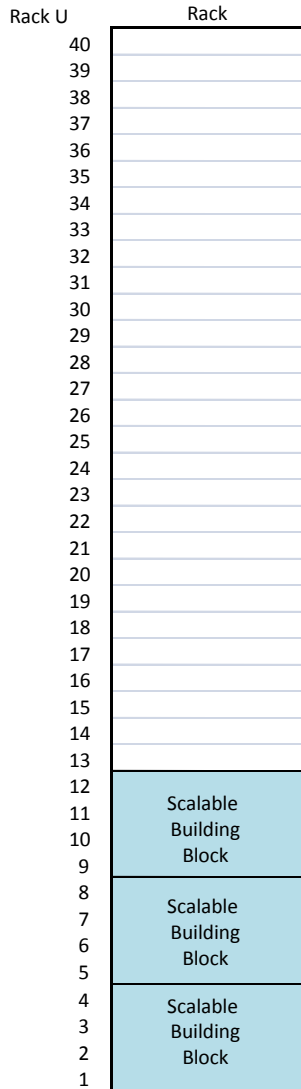


# Flexible Scalability





# Measurable Benefits



- Up to 40% fewer drives
- 50% vertical space
- 50% the power
- Dramatically better write density
- Dramatically better read density

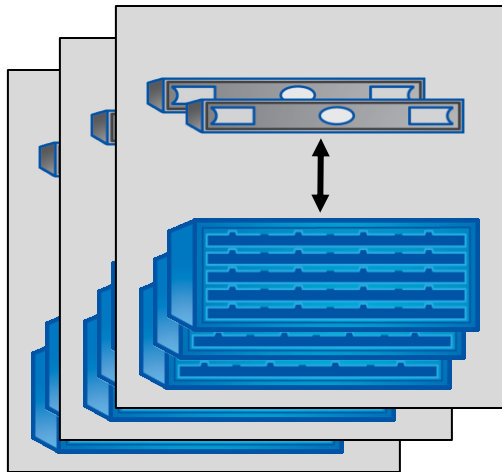


# Achieving Scalability

IPC  
Network



File  
System  
Nodes

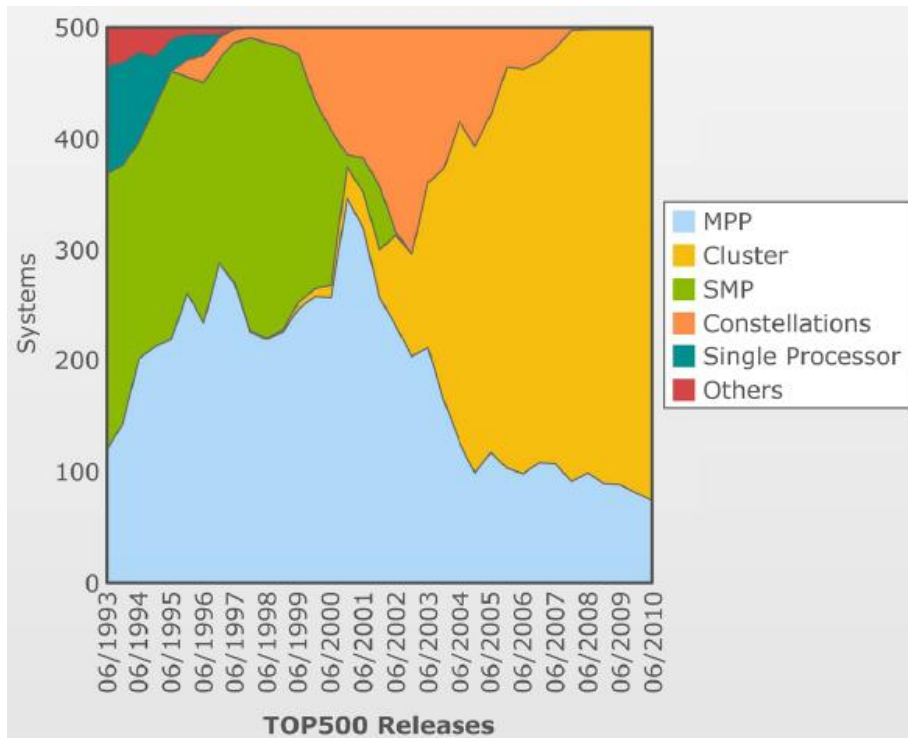


Block  
Storage

- IPC Cluster Connect
  - IPC  $\leftrightarrow$  file System Nodes
  - InfiniBand
- High performance, low latency block IO
  - InfiniBand
  - SAS
- Purpose built storage
  - Robust
  - Resilient



# Not the first time



Top500, June 2010

- Compute tipped from monolithic (MPP) to modular (Clustered)
- Storage is now

# Closing Thoughts



- Intelligent, reliable performance is paramount
- Modularity is optimal
- Purpose built a must



Thank you

